

TECHNICAL SPECIFICATION

Tower Alert Light

360° degree
disinfection coverage

Battery charging
time: 4 hours

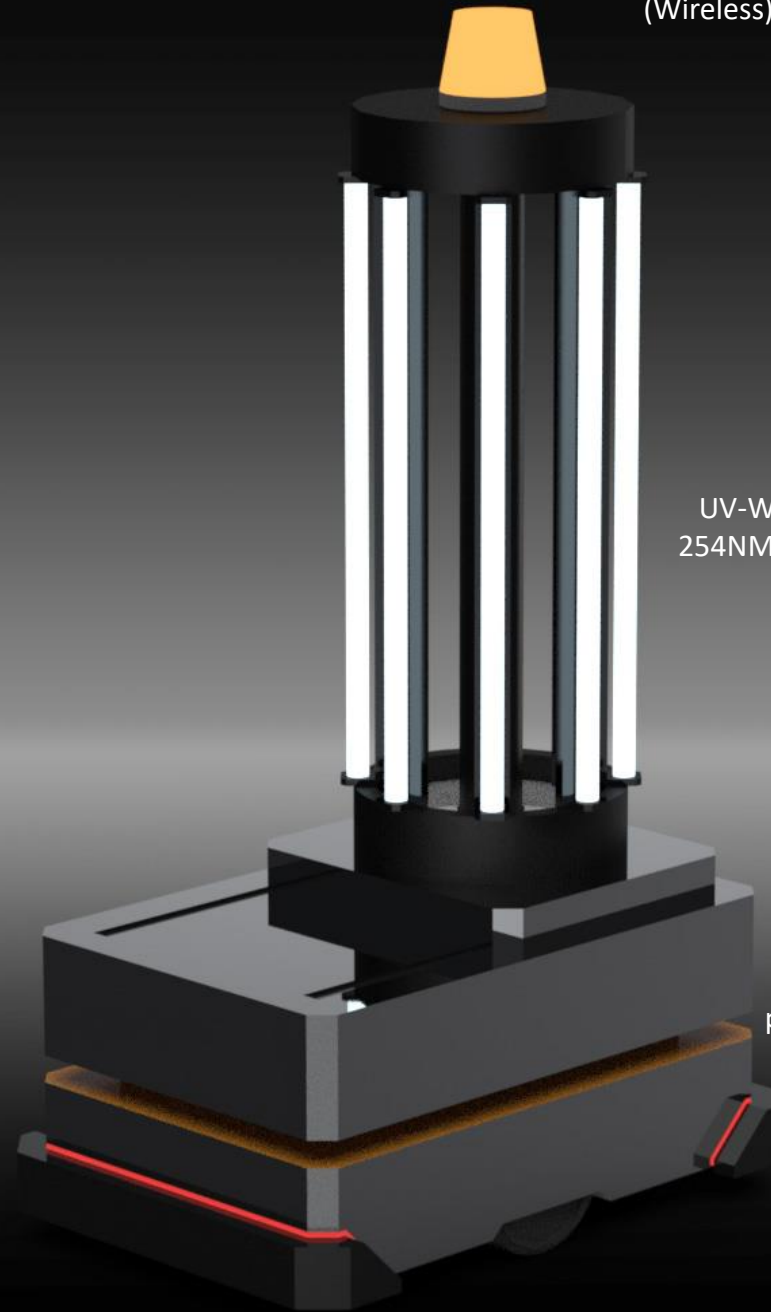
Speed: Up to
5.4 km/h



Connectivity: WiFi based
(Wireless) and with native
app.

UV-Wavelength:
254NM (UV-C light)

Operating time
per charge: 3 Hrs



TECHNICAL SPECIFICATION – UV MOBILE ROBOT

Parameter	Unit	UV Mobile Robot Specification
DIMENSIONS	Length	900 mm
	Width	550 mm
	Height from Ground	1800 mm
	Ground clearance	50 mm
	Wheel size	100 mm
	Color	Base Gray, Top Light Gray
	Pay Load	20 kg
SPEED AND PERFORMANCE	Running time	3hrs
	Maximum speed	1.5 m/s (adjustable)
	Turning Radius	1100mm (around center of the robot)
	Positional Accuracy	+/- 20mm/1In
POWER	Battery	Li-ion 24V, 20Ah rechargeable
	Charging Time	4 Hours (approximate)
	External charger	Input 230V AC/50Hz O/P 24V, Max 15A

TECHNICAL SPECIFICATION – UV MOBILE ROBOT

Parameter	Unit	UV Mobile Robot Specification
COMMUNICATION	Wi-Fi	Dual Band high speed wireless
	I/O connectors	USB and Ethernet
	Controller connectors	USB/HDMI
SENSORS	LiDAR Sensor	SICK/ Reputed Brand
	Range sensors	Sonar or laser for obstacle detection
	Internal sensors	Encoders with motors
DRIVE SYSTEM	Motor	BLDC Geared Motor 24V, 45Nm, RPM 500 with Encoder
	Motor Driver	Cytron 30A
CONTROLLER	Latte Panda Alpha 864s with NVidia Jetson	With all accessories
ON BOARD SYSTEMS	UV Light Lamp Length	800 mm
	No of Lamps	6 Nos
	On Board Camera	Yes , High Definition
	On Board Alert Speaker	Yes
	On Board Alert Light	Yes

UV MOBILE ROBOT WORKFLOW

DISINFECTION TIME
10 MIN

